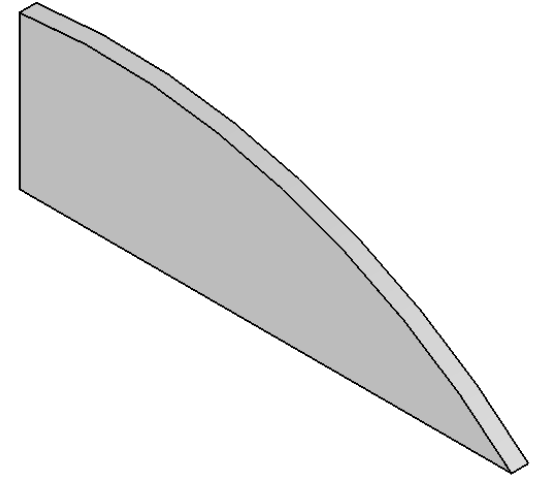
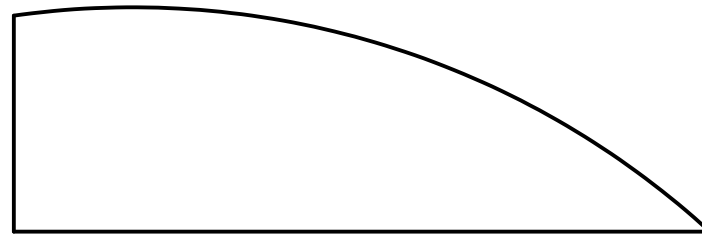


F-CAR & X-BODY ROLL CAGE SUBFRAME CONNECTOR REINFORCEMENT TEMPLATE

Instructions:

1. Cut out template
2. Outline template on piece of 1/8" Steel Plate and cut out
3. Bend Line 1 90°
4. Bend Line 2 and contour triangle to floorpan (see attached picture)



F-CAR & X-BODY ROLL CAGE SUBFRAME CONNECTOR REINFORCEMENT GUSSET TEMPLATE

Instructions:

1. Cut out template
2. Outline template on piece of 1/8" Steel Plate and cut out
3. Fit to Subframe Connector Reinforcement and trim as necessary
4. Weld Gusset to Reinforcement Plate (See picture)



ROLL CAGE SUBFRAME REINFORCEMENT ASSEMBLY

If you have any questions please contact
Detroit Speed and Engineering
infor@detroitsspeed.com 810.227-6343

