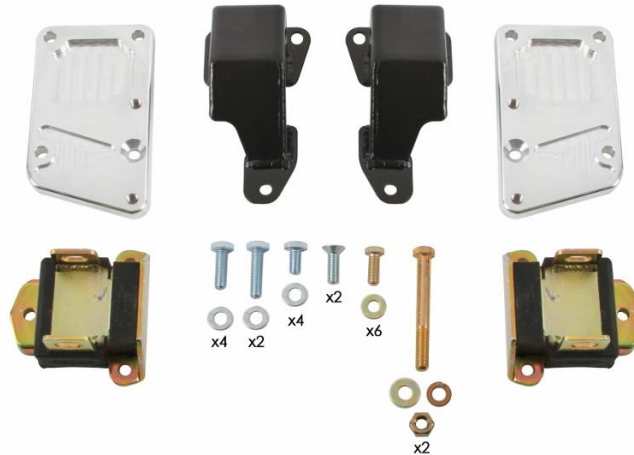




**Detroit Speed**  
**LS Engine Mount Kit**  
**Detroit Speed Chevy II Frame**  
**P/N: 060416DS**

The Detroit Speed LS Engine Mount Kit will provide you with an ideal mounting solution for the LSx conversion into the Detroit Speed Chevy II Frame Assembly.



Item	Description	Quantity
1	Engine Mount Adapter Plate, LH & RH	2
2	Frame Stand, LH & RH	2
3	Polyurethane Engine Mounts	2
4	M10 x 1.5 x 30 Countersunk Bolt	2
5	M10 x 1.5 x 30 Flange Head Bolt	4
6	M10 x 1.5 x 20 Flange Head Bolt	4
7	M10 x 1.5 x 40 Flange Head Bolt	2
8	7/16"-14 x 3-3/4" L Hex Head Bolt	2
9	7/16"-14 Hex Nut	2
10	7/16" Flat Washer	4
11	7/16" Lock Washer	2
12	3/8"-16 x 1" L Hex Head Bolt	6
13	3/8" Flat Washer	6

Fastener Torque Specifications	
Application	Torque (lb-ft)
Adapter Plate to Engine Block (Aluminum Block)	25
Adapter Plate to Engine Block (Cast Iron Block)	35
Engine Mount to Adapter Plate (Upper Bolts)	25
Engine Mount to Adapter Plate (Lower Bolts - Aluminum Block)	25
Engine Mount to Adapter Plate (Lower Bolts - Cast Iron Block)	35
Frame Adapter to Crossmember	35
Frame Adapter to Engine Mount	45

1. To begin installation, locate the engine mount adapter plates in the kit. The milled side of the mount will face away from the engine with the smooth side going to the block. The end of the adapter plate with the angle cut will go to the front of the vehicle.
2. To mount the engine mount adapter plate to the engine, use two M10x1.5x30 flange head bolts (#5) and one M10x1.5x30 countersunk bolt (#4) per side. Use anti-seize on these bolts and torque to 35 ft. /lbs. On aluminum engine blocks, torque the bolts to 25 ft. /lbs. and on cast iron blocks.
3. The engine mount installs next. Use two M10x1.5x20 flange head (#6) bolts in the top of the mount and one M10x1.5x40 flange head bolt (#7) in the bottom of the mount. Torque the upper bolts into the adapter plate to 25 ft. /lbs. For the lower bolts, torque to 25 ft. /lbs. on an aluminum block and 35 ft. /lbs. on a cast iron block. Again, use anti-seize on these bolts.
4. Attach the frame stands to the subframe using three 3/8"-16x1" L hex head bolts (#12) and three 3/8" flat washers (#13) per side. Use High Strength Red Loctite 262 on these bolts and torque to 35 ft. /lbs. **NOTE:** There is a LH and a RH Frame Adapter. Refer to Figures 1 & 2 below to determine LH or RH Frame Adapter Mounts.

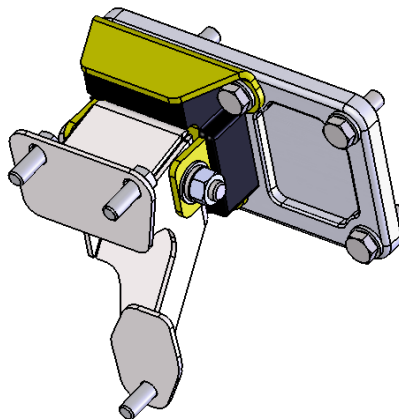


Figure 1 - LH Frame Stand



Figure 2 - RH Frame Stand

5. Once everything is positioned correctly on the frame and engine. Attach the engine to the frame using two 7/16"-14 x 3-3/4" L hex head bolts (#8). Use the provided flat washers (#10), lock washer (#11) and the hex nut (#9) to tighten everything in place. Torque to 45 ft. /lbs.



If you have any questions before or during the installation of this product, please contact Detroit Speed Inc. at [tech@detroitsspeed.com](mailto:tech@detroitsspeed.com) or 704.662.3272

**Legal Disclaimer:** Detroit Speed is not liable for personal, property, legal, or financial damages from the use or misuse of any product we sell. The purchaser is solely responsible for the safety and performance of these products. No warranty is expressed or implied.