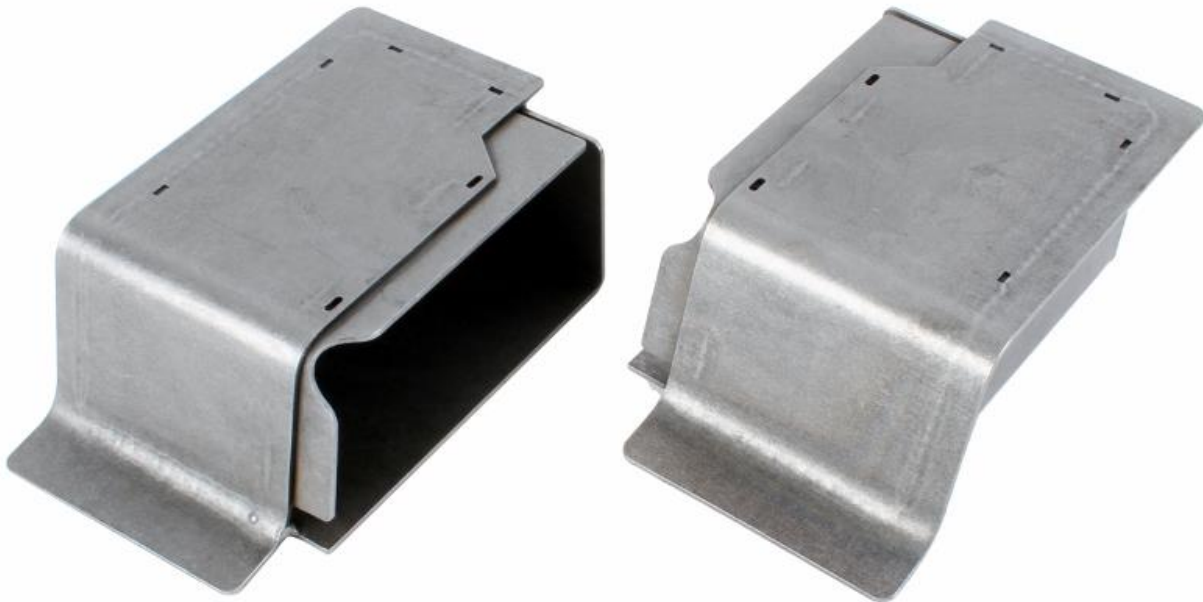


Detroit Speed
Torque Box Kit
1962-67 Chevy II
P/N: 9304115

Detroit Speed's Torque Box Kit has been designed to be used with the DSE Subframe Connectors for a 1962-67 Chevy II. This kit will need to be installed before the subframe connectors if the vehicle does not have a Detroit Speed QUADRALink Kit.



Introduction

Please read the entire set of instructions, watch the installation video available on the Detroit Speed website, and fully understand all of the steps involved before beginning the project. Always make sure to wear the appropriate safety equipment for the job and properly support the vehicle.

NOTE: There is an installation video available through the Detroit Speed website in the tech/install video shown here:

<https://www.detroitsspeed.com/1962-67-chevy-ii-installation-videos>.

The Torque Box installation is shown at the 03:46 mark of the 1962-67 Chevy II Subframe Connector Installation Video.

NOTE: All work should be performed by a qualified welder and technician.
Installation Instructions

1. Before beginning the installation, read and comprehend the entire set of instructions.
2. Raise the vehicle a few feet off the ground so the interior and underside may be accessed. Begin by properly supporting the vehicle under the rear axle and front subframe to avoid tension in the body when installing the connectors.
 - a. Disconnect the negative battery cable.
 - b. Remove the seats, carpet and padding. Any other interior panels, headliner, door panels, etc., should be removed or masked well to protect them from grinding and welding sparks.
3. Install the torque boxes.
 - a. Fit the torque boxes at the front inboard side of the rear framerails against the underside of the floorboards. There are depressions in the floor at the lower rear seat mount that interfere with the top of the torque boxes that need to be cut out.
 - b. Mark locations on the floorboards and inner framerail flanges and drill 3/8" diameter holes for plug welds.
 - c. Weld the torque boxes in position.



Torque Box Installation

If you have any questions before or during the installation of this product, please contact Detroit Speed at tech@detroitsspeed.com or 704.662.3272

Legal Disclaimer: Detroit Speed is not liable for personal, property, legal, or financial damages from the use or misuse of any product we sell. The purchaser is solely responsible for the safety and performance of these products. No warranty is expressed or implied.